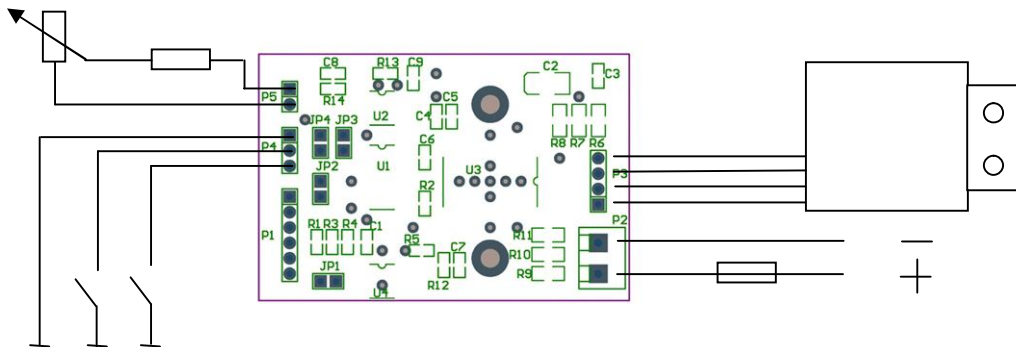


10 K -150 K 2 K

PUMP



0,6A 12 V

DIR. EN./ DIS.

In this scheme jumpers JP3 and JP4 must be **disconnected**.

This scheme allows the user to easily run and stop the pump, to change the direction of flow and regulate the debit.

If this is not necessary to P4 connector does not bind anything, and JP3, JP4 must be connected.

If you do not need to adjust the debit of the pump – to the P5 connector may connected constant resistance from 2 to 150 K.

If you want to run the pump from outside microcontroller you must complete the following requirements:

1. Turn off jumpers JP2 JP3 and JP4

2. On P1 connector must be submitted following signals:

- Pin 6 - logic 1 or 0 for on / off

- Pin 3 - frequency pulses to regulate the speed of rotation of the motor

- Pin 4 - logical 1 or 0 for setting the direction of rotation of the motor